

Dublin Restaurants





Marco Pierre White Steakhouse & Grill

Description

Marco Pierre White Steakhouse & Grill on Dawson Street is one of Dublin's most iconic restaurants, created by world-renowned chef Marco Pierre White. The menu combines classic steakhouse dishes with modern Irish cuisine, served in a glamorous Georgian setting with plush interiors and a chic outdoor terrace. Ideal for private dining, corporate events, and celebrations.

Location

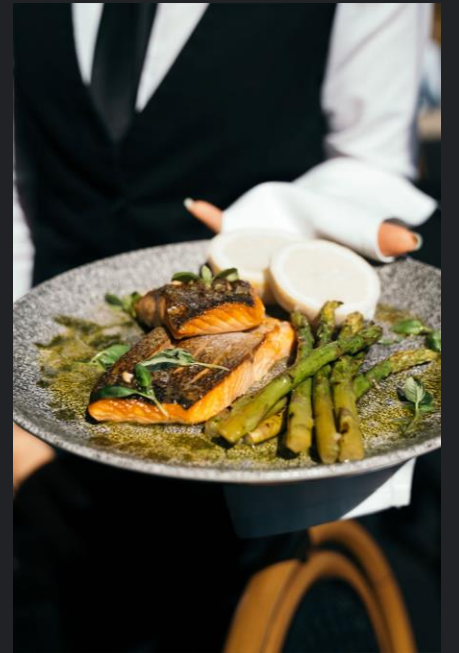
51 Dawson Street, Dublin 2

[Google maps](#)

Capacity

Indoor private dining: up to 90 guests

Outdoor terrace: additional 25 guests



Asador

Description

Asador is a contemporary restaurant on Haddington Road specializing in open-fire cooking. It merges Irish ingredients with Mediterranean and South American techniques, creating bold, flavorful cuisine. The venue features a heated, enclosed terrace, perfect for private and intimate dining events.

Location

Victoria House, 1 Haddington Road, Dublin 4

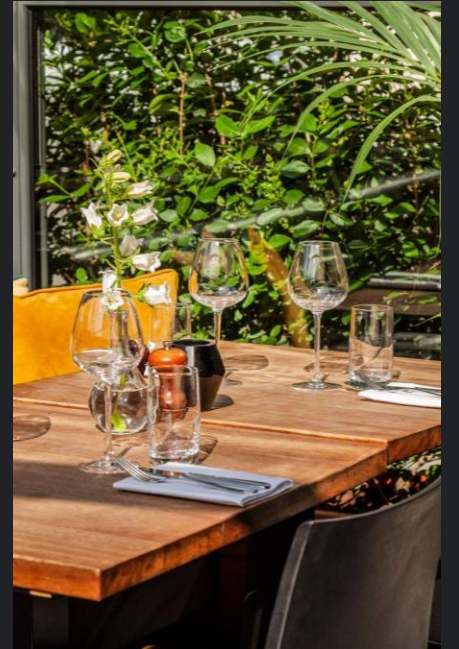
[Google maps](#)

Capacity

Main dining room: 100 seated

Private terrace: up to 45 guests for seated dining, 60 for cocktails







Dion Rooftop Bar

Description

Opening this November, Dión will be Dublin's first full rooftop restaurant and bar, located atop the former Central Bank building on Dame Street. With 360° panoramic views of the city, the venue blends 1970s design with modern Irish influences, featuring steel, glass and luxurious interiors. It will offer a restaurant, bar and lounge experience all in one, ideal for private events and stylish social gatherings.

Location

Central Bank Building, Dame Street, Dublin 2

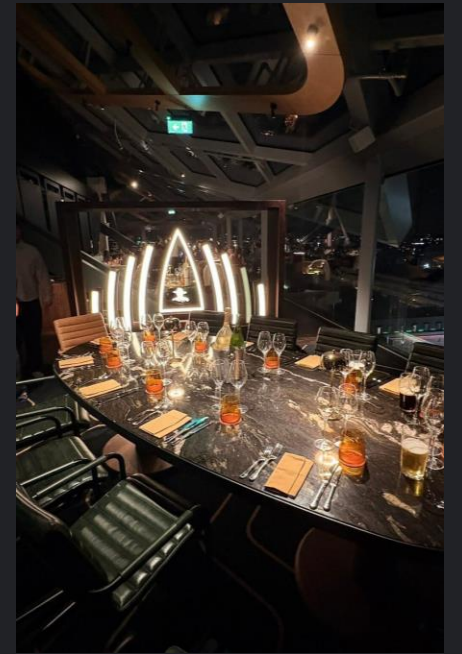
[Google maps](#)

Capacity

Total capacity: up to 210 guests

Two semi-private dining rooms (24 each / 48 combined)

Rooftop zones with three bars, lounges and dining areas





The Ivy Dawson Street

Description

The Ivy Dawson Street is a stylish brasserie in the heart of Dublin, offering all-day dining with classic dishes, creative cocktails, and elegant décor. Its private dining space, the Jonathan Swift Room, reflects Dublin's literary heritage and provides a sophisticated setting for exclusive events.

Location

13-17 Dawson Street, Dublin 2

[Google maps](#)

Capacity

Jonathan Swift Room: up to 32 guests (seated)





Sussey Street

Description

Sussey Street delivers an elegant corporate/private dining experience in Dublin's Georgian district. With refined décor, impeccable service, and seasonal & international cuisine adapted to dietary needs, it's the perfect setting for business lunches, anniversaries, or intimate celebrations.

Location

26 Fitzwilliam Place, Dublin 2

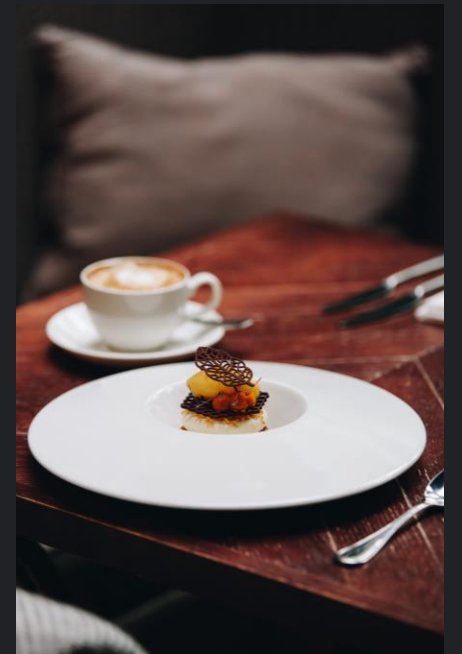
[Google maps](#)

Capacity

The Sussey Suite: 15-30 guests

The Garden Room: up to 40 guests, heated & canopy, al fresco feel; exclusive hire minimum 30 adults

Full Venue Exclusive: bar + restaurant + garden room – up to 100 seated / 120 standing





FIRE Steakhouse & Bar

Description

FIRE is a multi-award winning steakhouse & bar in the heart of Dublin city centre. Housed in the historic Mansion House, its private dining rooms on the first floor feature vaulted ceilings, stained glass windows, floor-to-ceiling windows, plus your own terrace overlooking the Lord Mayor's Garden. Warm, professional service paired with outstanding cuisine makes every event special.

Location

The Mansion House, Dawson Street, Dublin 2, Ireland

[Google maps](#)

Capacity

Terrace Suite: up to 56 pax

Trinity & St. Stephen's Suites: 14 pax each

Glass Room Suite (combined): up to 84 pax

Main Dining Room (private lunches): up to 200 pax

Availability for your event

TBC

For your event

TBC





SOLE Seafood & Grill

Description

SOLE offers a high-end yet relaxed private dining experience in the heart of Dublin. Their luxurious private rooms combine exceptional Irish cuisine, attentive service, and elegant décor, ideal for celebrations, corporate dinners, or memorable gatherings.

Location

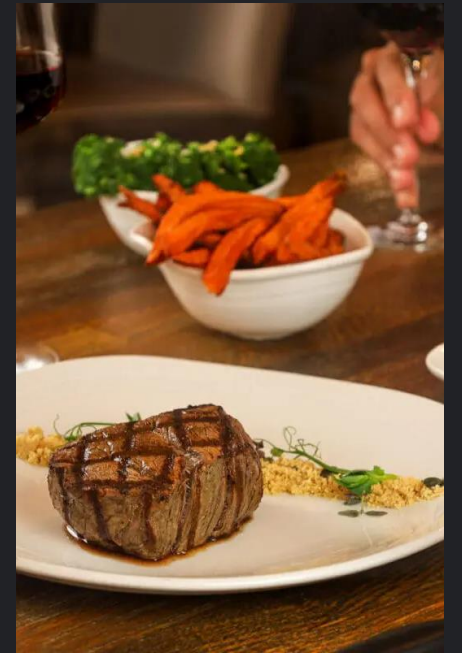
18-19 South William Street,
Dublin 2

[Google maps](#)

Capacity

The Captain's Table: 12-18 guests long table format with wow factor

The Cove: up to 14 guests intimate and luxurious





Café en Seine

Description

Café en Seine is one of Dublin's most iconic venues, located on Dawson Street. Blending Parisian elegance with vibrant Dublin energy, it offers a variety of stylish spaces including the Grand Bar, Restaurant, Cocktail Bars and the Street Garden – a stunning covered courtyard with retractable roof.

The venue is ideal for private events, corporate functions or lively group celebrations. Guests can enjoy tailored dining experiences, from finger food and supper bowls to full lunch and dinner menus, complemented by premium cocktails, wine and live entertainment.

With a capacity of up to 1,000 guests, Café en Seine provides flexibility, exclusivity and a unique atmosphere in the heart of Dublin city.

[Virtual Tour](#)

Location

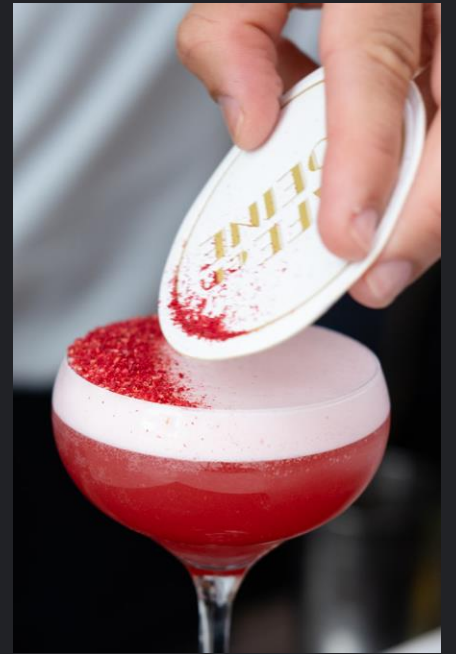
Dawson Street, Dublin 2

[Google maps](#)

Capacity

Seated: varies per space
(Restaurant: 50 pax,
Street Garden: 200 pax)

Standing: up to 1,000 pax
(across all spaces)





BrewDog Dublin

Description

BrewDog Dublin Outpost is a two-floor, 10,000 sq. ft. venue in the Docklands, featuring bars, terraces, shuffleboards, a fireplace, and a photobooth.

A lively, modern setting combining craft beer culture with urban energy.

Location

Three Locks Square, Dublin Docklands

[Google maps](#)

Capacity

Standing: up to 500 pax

Seated: up to 275 pax

Package

Exclusive area with terrace access

Arrival Prosecco reception

Party platters (sliders, wings, nachos, veggie options)

Drinks package: IPA, Lager, Pale Ale, Stout & Wine

Enhancements

Shuffleboard tournaments, photobooth, dessert add-ons





Lennan's Yard

Description

Unwind and celebrate in style in one of Dublin's best-kept secrets. Lennan's Yard combines heritage architecture with a vibrant atmosphere, perfect for a chic and relaxed Afterglow Party following your main event or farewell dinner.

Set across a heated courtyard and stylish loft bar, the venue offers a warm, festive vibe with signature cocktails, curated playlists or live DJs, and seasonal Irish bites.

Location

Dawson Street, Dublin 2

[Google maps](#)

Capacity

The Yard: up to 100 standing

The Loft: 40–50 seated | 70 standing

Full venue: up to 150 guests





BANG Restaurant

Description

Located just off St. Stephen's Green, BANG Restaurant is one of Dublin's top contemporary dining venues combining creative Irish cuisine with elegant interiors and exceptional service. The restaurant offers several private and semi-private spaces ideal for corporate dinners, celebrations, and incentive groups.

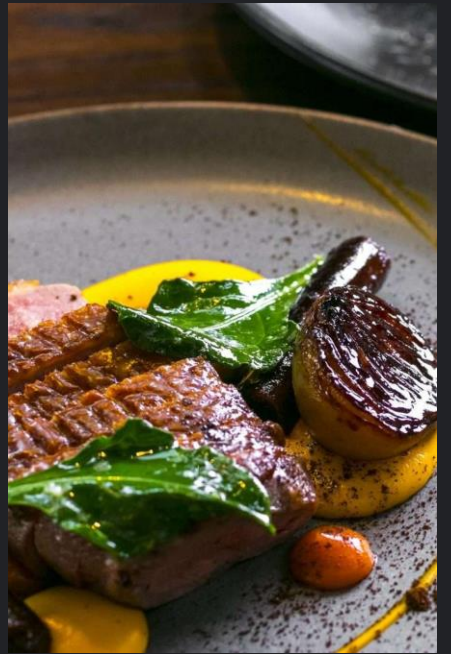
Location

11 Merrion Row, Dublin 2

[Google maps](#)

Capacity

- Scott Tallon: 42 seated / 35 standing
- Mezzanine: ~28
- Lower Ground Floor: 60
- Entire Venue: 132 seated / 138 standing





Isabelle's Restaurant & Bar

Description

Located just off Grafton Street, Isabelle's is a modern and vibrant restaurant offering seasonal Irish and international cuisine in a bright, elegant setting. With its open kitchen and outdoor terrace overlooking Royal Hibernian Way, it's perfect for group dinners, private events, or casual receptions in the city centre.

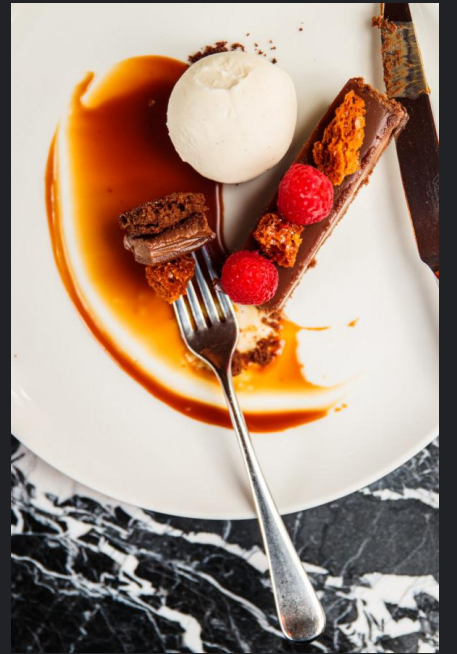
Location

13–14 Anne Street South,
Dublin 2

[Google maps](#)

Capacity

- Seated dining: up to 120 guests
- Standing reception: up to 200 guests
- Terrace: up to 30 guests seated / 35 standing





Fade Street Social

Description

Located in Dublin's Creative Quarter, Fade Street Social is one of the city's most versatile dining and event venues. Spanning a contemporary restaurant, cocktail bar, private dining spaces, and a rooftop terrace, it offers the perfect setting for both elegant dinners and lively receptions.

Location

6 Fade Street, Dublin 2

[Google maps](#)

Capacity

- Main Restaurant: up to 100 guests seated
- Drawing Room (Private Dining): up to 45 seated / 65 standing
- Rooftop Terrace: up to 60 guests
- Full Venue Hire: up to 250 guests seated





The Pig's Ear

Description

Refined contemporary Irish restaurant set in a Georgian townhouse on Nassau Street, overlooking Trinity College. The Pig's Ear is known for its warm, understated elegance, exceptional service and a strong focus on modern Irish cuisine using seasonal, locally sourced produce. Its discreet private rooms make it particularly well suited to high-end corporate dinners and intimate group experiences in the heart of Dublin.

Location

4 Nassau Street, Dublin 2

[Google maps](#)

Capacity

- Mirror Room (1st floor): up to 55 guests seated
- First Floor Private Rooms (combined): up to 48 guests seated
- Library (3rd floor): intimate private dining for up to 10 guests





Hawksmoor Dublin

Description

A stylish and contemporary restaurant set within a beautifully restored historic building in the heart of Dublin. Hawksmoor is renowned for its high-quality Irish beef, seasonal produce and relaxed yet refined atmosphere, making it an ideal choice for private group dining and hosted social evenings.

Catering & Facilities

- Set menus available for group dining
- Irish beef and seafood-focused menus
- Full bar and wine selection
- AV available on request for speeches
- Evening private dining options available

Location

College Green, Dublin city centre

[Google maps](#)

Capacity

- Private Dining Room: up to 24 guests (seated)
- Semi-Private Areas: up to 60 guests
- Exclusive Hire (on request): larger capacities available, subject to buyout





House Dublin

Description

House Dublin is a stylish and elegant dining venue set in a beautifully restored Georgian townhouse.

Guests can enjoy modern European cuisine in a series of intimate, character-filled rooms, each with its own distinctive ambience. A standout feature is the picturesque garden terrace that offers a relaxed and refined outdoor dining option in the heart of the city.

Location

26/27 Lower Leeson Street
Dublin 2

[Google maps](#)

Capacity

- Total Venue: Up to 850 guests
- Main Bar: Up to 100 guests
- Garden Terrace: Up to 250 guests





Floritz

Description

Floritz is a vibrant and contemporary dining venue that blends historic charm and bold, globally inspired flavours. Set in a beautifully designed townhouse space, the restaurant offers an Asian-inspired menu built around small and larger plates perfect for sharing.

The interior exudes sophistication and charm, featuring plush seating, striking and a central bar – making it equally suited to relaxed lunches, special occasions and lively evening dining.

Location

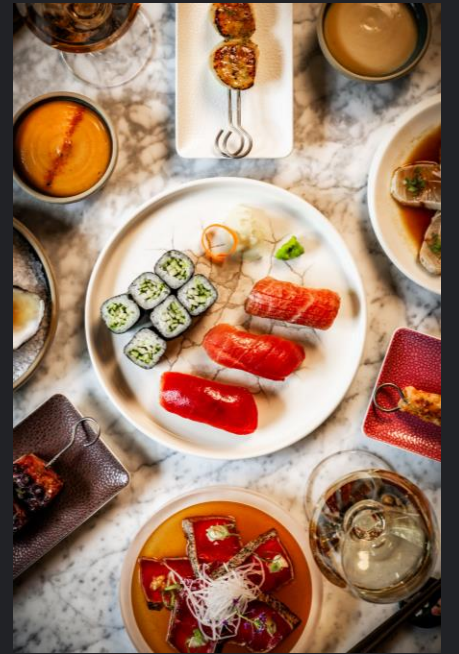
22 Stephen's Green

Dublin 2

[Google maps](#)

Capacity

- Entire Venue: Up to 75 guests





Cantina Valentina

Description

Cantina Valentina is a stunning Peruvian-inspired restaurant nestled on the ground floor of The Hoxton, offering a playful yet refined all-day dining experience. The menu blends classic Peruvian dishes with contemporary twists that encourage sharing and discovery.

The setting is bright and welcoming, with design touches that reflect South American influences while keeping a relaxed and modern atmosphere.

Location

1-5 Exchequer Street

Dublin 2

[Google maps](#)

Capacity

- Venue: Up to 80 guests





M.J. Wright

Description

M.J. Wright is a warm and character-filled family-run pub and restaurant located in the heart of Dublin City. Housed in a historic-four storey building, the venue blends classic Irish pub atmosphere with contemporary hospitality.

On the ground floor and in the Cellar Bar, guests can enjoy a true Irish pub experience in a cosy lively setting while upstairs the Eating Rooms offer a relaxed yet intimate dining experience with a modern European-inspired menu

Location

17 South Great George Street
Dublin 2

[Google maps](#)

Capacity

Brown Butterfly Function Room - 3rd Floor

- Max capacity: 100 guests
- Minimum private hire: 40 guests
- Private bar
- Sound system
- Projector screen on request

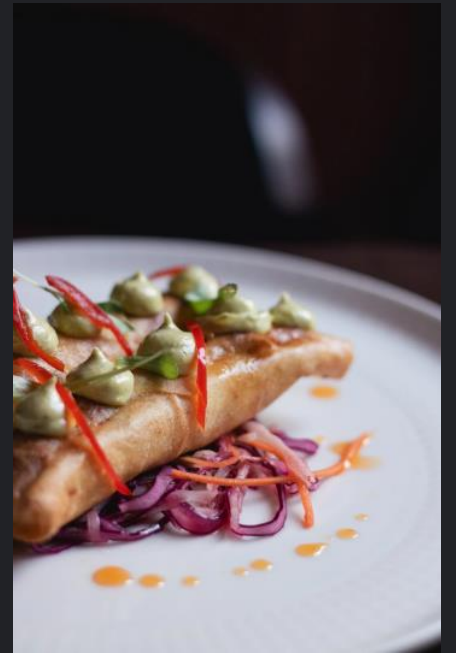
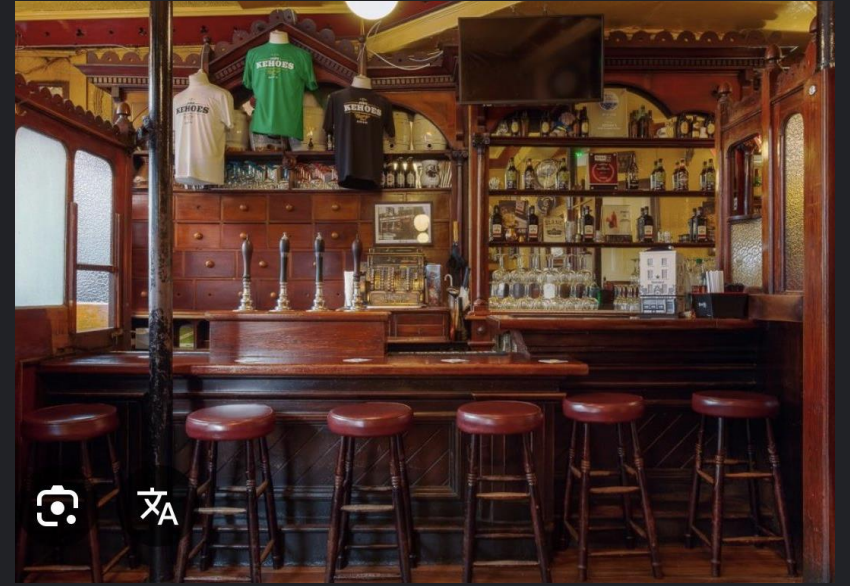
Private Dining Room - 1st Floor

- Max capacity: 25 guests
- Set menu required
- Cellar Bar & Ground Floor

Cellar Bar: 60 guests

Ground Floor: 70 guests

- Minimum 15 guests to reserve area
- Live music available



The Old Storehouse

Description

Traditional Irish pub and restaurant set in a 19th-century building in Temple Bar. Warm interiors with dark wood and multiple levels create an authentic Dublin atmosphere.

Known for daily live traditional Irish music and classic Irish dishes such as stew, seafood chowder and fish & chips. Best suited for informal group lunches with a lively, social vibe.

Cuisine

Traditional Irish fare with international options. Typical lunch dishes include:

- Irish stew
- Fish & chips
- Seafood chowder
- Steak sandwich
- Burgers
- Vegetarian options available

Location

3 Crown Alley, Temple Bar, Dublin 2.

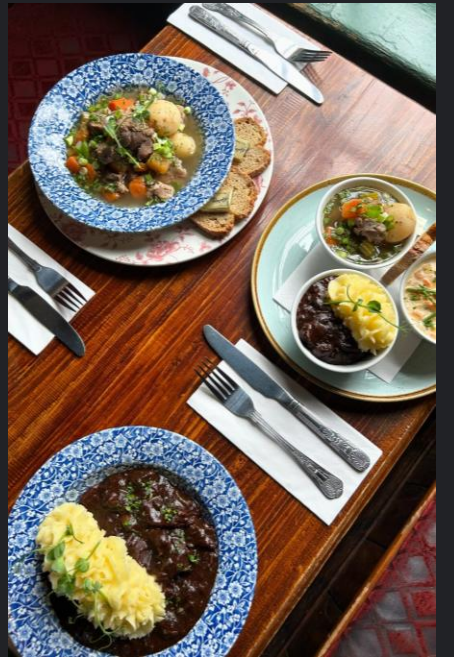
Situated in the centre of Temple Bar district, within walking distance of Trinity College, Grafton Street and most central Dublin hotels.

[Google maps](#)

Capacity

- Up to 200+ guests across the full venue (standing and seated combined, subject to layout)
- Smaller group allocations possible within the main restaurant space







The Bank on College Green

Description

The Bank on College Green is a striking restaurant set in a restored Victorian former banking hall right in the heart of Dublin city centre.

The menu offers a seasonally inspired menu that blends Irish and European cuisine, all served in an atmosphere that's both elegant and lively.

Location

20-22 College Green
Dublin City

[Google maps](#)

Capacity

- Semi-Private Mezzanine Level: Up to 24 guests
- Main bar & Dining Space: Up to 75 guests
- The Bank Manager's Private Room: 5-8 guests

